

# THE LADYBUG

## Do We Have Your Correct Contact Info?

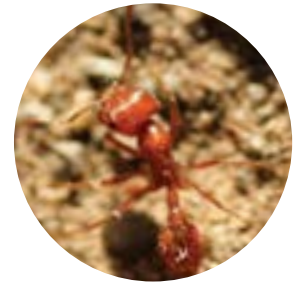
At times, we may need to get in touch with you about your yard, our service, special offers, or lawn care advice. **Please take a moment to make sure we have your correct phone number and email address.** You can check and update your contact info by:

- Calling our office at **770.777.0764**
- Emailing us at **info@SimplyOrganicTurfCare.com**
- Visiting our customer portal at **SimplyOrganicTurfCare.com** – just click “Pay Online.”

The portal is also a convenient, secure way to pay your bill, request a free service call or estimate, and generally manage your relationship with SO. Setting up your portal account is quick and easy, but if you need assistance, give us a call. We’re always happy to help.

## Fire Ant Control Should Be Left to Trained Professionals

You’re probably not worrying about fire ants during the winter. However, these nasty pests become active as early as March, or when temperatures approach the mid-60s. That point isn’t too far off, and we want you to be prepared with knowledge and a plan of action.



Red fire ants (which are actually reddish-brown) may be the most dangerous and destructive of all fire ant species. And, unfortunately, these pests love your Atlanta lawn as much as you do. They thrive in our warm, humid climate and prefer to build their mounds in open, sunny spaces, like lawns.

### What to watch for

As spring approaches, keep an eye out for these telltale signs of a fire ant problem.

- **Mounds in your lawn** – Some fire ant mounds are big and obvious; however, in well-maintained lawns, they are rarely more than a few inches high. So you may need to actively inspect your lawn to detect them.
- **Morning and evening activity** – It’s not uncommon for fire ants to leave their nests and go scavenging for food in the morning and evening hours. It pays to look for them during these times of day.

### DIY fire ant control is dangerous

Whether you’re seeing red fire ants or other species, the problem should be treated by a trained professional. Here’s why.

- **Fire ants attack in large numbers when they are threatened.** For the inexperienced homeowner attempting to treat with store-bought pesticides, this could mean getting multiple stings at the same time.
- **Pesticides harm more than fire ants if not applied correctly.** Pesticides are toxic, and when handled improperly, they can be harmful to anyone exposed to them, including children and pets. They can also adversely affect the soil and your grass.

**Ask about our Fire Ant Control with your next application.** Simply Organic techs are trained to apply pesticides safely and effectively. With just a single application, we can control fire ants for a full year.



You have reached our customer portal where you can manage your Simply Organic account online.

You can securely pay your bill by credit card and even set up autopay. You can also arrange for more services or request a service call. We can give your lawn everything it needs but doesn't deserve.

If you refer a neighbor or a friend now, you'll receive a \$10 credit on your account after their first treatment.

Not yet a customer? [Get started today!](#)

We hope you find these features convenient and easy to use. If you have any questions, please email me at [barbara@simplyorganiccare.com](mailto:barbara@simplyorganiccare.com) or give us a call.

Thanks for shopping by:  
Nathan Walker - Branch Manager  
770.233.0294

## Application #1 January-February

### Lawn Care

#### Fertilization

Lawns received one of our proprietary blends of organic fertilizer. We apply different blends to cool-season grass, like Fescue, and warm-season grass, like Bermuda or Zoysia.

#### Weed Control (hybrid option)

We applied two synthetic (non-organic) weed controls: one to prevent crabgrass and other grassy weeds from germinating, and another to take care of existing broadleaf weeds, which will die off over the next two weeks.

## Application #2 March-April

### Lawn Care

#### Fertilization

To promote healthy growth, lawns will receive an application of poultry litter, a natural high-quality source of nitrogen and many other important nutrients.

#### Weed Control (hybrid option)

Weed treatments will include a synthetic pre-emergent that targets grassy weeds and a synthetic post-emergent that kills off existing broadleaf weeds.

### Ornamental Tree & Shrub Care

(Simply Plus Program)

#### Pest & Disease Control

Treatments include an insecticide to control aphids, lace bugs, and leafhoppers, plus a dormant oil to prevent leaf spot, powdery mildew, and other fungal diseases. Both treatments are free of neonicotinoids ("neonics") and safe for bees and other pollinators.

### Ornamental Tree & Shrub Care

(Simply Plus Program)

#### Pest Control

Our application of a bee-safe dormant oil prevents damage from insects that overwinter in trees and shrubs. The dormant oil does not contain neonicotinoids ("neonics"), so it won't harm bees or other pollinators. This application, plus the one done in December, provides winter-long protection.

### What You Need to Do Until Our Next Visit

#### Mow at the Right Height

In the winter, raise the mower deck about a half-inch for warm-season grass. This allows the grass to store more nutrients. Whatever the season or grass type, remove no more than one-third of the grass blade in a single mowing. Also, leave the clippings behind to recycle back into the soil.

#### Water Wisely

Winter can be pretty rainy, so be sure not to over-water, which can lead to lawn diseases and other problems. As we move into warmer, sunnier spring, aim to irrigate in the morning, ideally before 10 am. It's a great way to conserve water by minimizing evaporation; it also lowers the risk of moisture-related fungal diseases.

**Questions about our service or your yard?** Call Customer Service at **770.777.0764**, Monday thru Friday, 8 am to 5 pm. After hours, leave a message and we'll get back to you the next business day. You can also email our Branch Manager, Nathan Wacker, at [Nathan@SimplyOrganicTurfCare.com](mailto:Nathan@SimplyOrganicTurfCare.com).

## It's Not Too Early to Schedule Spring Aeration

What do you get when you combine winter frosts and Georgia's dense clay soil? Bermuda and Zoysia lawns that struggle to flourish in the spring. Aeration loosens up compacted soil so vital air, water, and nutrients can travel down to the roots, promoting a stronger root system, more stress-resistant turf, and a thicker, healthier lawn.

We're already taking appointments for spring aeration in April and May. Call to schedule yours today!



## Helpful Contact Information

### Simply Organic Turf Care

770.777.0764

800 Langford Drive, Suite B  
Norcross, Georgia 30071

[SimplyOrganicTurfCare.com](http://SimplyOrganicTurfCare.com)

### Branch Manager

**Nathan Wacker**

O: 770.777.0764 Ext. 1285

C: 404.825.6861

[Nathan@SimplyOrganicTurfCare.com](mailto:Nathan@SimplyOrganicTurfCare.com)



*Let nature do the work*